

# You Are Being Annexed into the City of Perris.

## Do you know how this affects you?

**Q:** What is annexation?

**A:** Annexation is how an unincorporated area is incorporated into an adjacent city or town. **There are three primary changes that will occur: taxes will increase, services will increase, and government representation will change.**

**Q:** How does this affect me?

**A:**

1. Increase in taxes. The increase in taxes is due to an increase in services, but there may be services some residents within the annexation do not want. *If services such as municipal trash collection are available, there is rarely an "opt out" option for residents.* Perris has its own water "company". After annexation, you will likely be paying the City of Perris to provide your water. However, the city is very likely to be sub-contracting with Eastern Municipal Water District or Western Municipal Water District to continue to provide your water. Your water will come from the same source as before, but now the City of Perris will likely want some income for "providing" that water.
2. More restrictive ordinances, regulations, and licensing requirements.
3. Part of the "municipal bureaucracy". With authority comes responsibility. Many decisions formerly made at the county level must now be made locally. Town residents must be willing to run for office and serve. They must be willing to be accountable for their decisions, likely for very little compensation. In addition, a town can be sued, so local residents also assume a degree of liability upon incorporation.
4. Cities and town must respond to state and federal mandates. State and federal agencies can place certain mandates upon cities and towns that they cannot place upon unincorporated areas.
5. Expansion will be governed by city regulations and approved by all city residents.

### Questions For You:

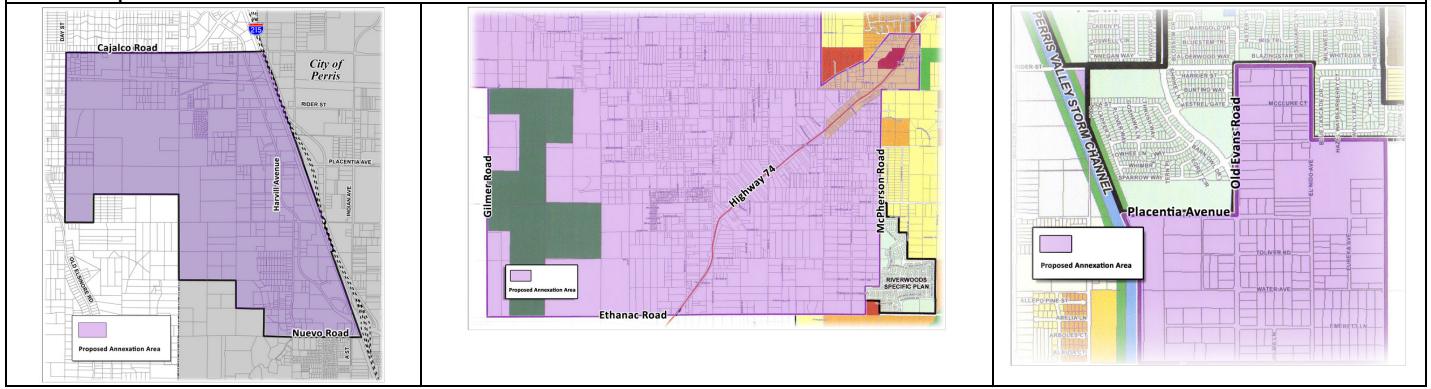
1. Does the city of Perris provide utilities themselves, or contract out to others to provide services?
2. Will they need to purchase existing utility infrastructure, in order to provide those same utilities, as the city of Riverside would have to? Guess who pays for that - not the existing city residents.
3. Will the city of Perris need to contract with the county in order to provide fire protection/suppression services for the expanded area? Right now, the county provides that service directly with it's own resources, or in some cases contracts with Cal Fire. If the city has to pay the county for those services, who pays the increased cost? The City of Perris began contracting the Riverside County Fire Department for fire and emergency services in 1983. The City of Perris has fourteen fire fighters assigned to two fire stations.

### Facts:

1. City of Perris representatives stated in the Press Enterprise that they are interested in annexation of the area because of the income they would benefit from. This is additional property taxes, sales taxes and so on. **Ask what they are doing FOR YOU!?**
2. The City of Perris began contracting with the Riverside County Fire Department for fire and emergency services in 1983. The City of Perris has fourteen firefighters assigned to two fire stations.
3. If your house address has four (4) or less digits, it is the City. Five (5) digits is the County.
4. You can always be annexed at a later date if you find it benefits you. Once a part of the city, you will not be able to go back to unincorporated.
5. If you do not voice your opposition at the hearing, you will not be able to do so at a later date.

**Q:** What areas are being affected?

**A:** 3 separate areas.



Please fill out the form below, cut on the line and send it to:

**RAGLM**  
 3410 La Sierra Ave. #F41  
 Riverside, CA 92503  
 (951) 286-4572  
 info@raglm.org

**More Information:**

- To View Larger Maps
- Print More Handouts
- Share Your Comments

Learn more here: <http://www.raglm.org/PerrisAnnexation>

We NEED Volunteers to get the word out. Please tell your neighbors about this. We would like to set up tables on the corners in this area to get more signatures, however we need some more help getting this done. If you wish to help us save your area and to keep Mead Valley rural, please contact us and let us know when you can help and how.

---

**Opposition to The Annexation of Mead Valley Into The City of Perris**

To: The Riverside County Board of Supervisors

I am opposed to the annexation of Mead Valley into the City of Perris. I moved to this area to live in a rural community and do not desire to become part of a city.

Please make this opposition part of the public record.

Thank you,  
Greater Lake Mathews Resident

Signature: \_\_\_\_\_

Name: \_\_\_\_\_ Date: \_\_\_\_\_

Address: \_\_\_\_\_